

# FOSTERING & EMPOWERING THE SOCIETY



# **TABLE OF CONTENTS**

02	<b>FACT SHEET</b>
04	<b>CAMPUSES &amp; LEARNING COMMUNITIES</b>
06	<b>JAKARTA &amp; INDONESIA</b>
08	<b>PARTNERSHIPS</b>
14	<b>STUDY PROGRAMS</b>
22	<b>FACILITIES</b>
24	<b>STUDENT LIFE</b>
26	<b>SCHOLARSHIP</b>
28	<b>TESTIMONIALS</b>

Visual design concept for this catalogue is developed by Visual Communication Design - New Media students.

**THANK YOU** Ignatio Rivaldo Runtu and Samuel Christopher Ng!



# WELCOME FROM THE RECTOR

Greetings from  
the bustling city of Jakarta,  
Indonesia!



For more than 38 years, BINA NUSANTARA Group has been well regarded as a knowledge provider contributing services and innovations for stronger Indonesia. BINUS Group runs programs from the kindergarten level all the way up to doctoral degrees, building global competencies through local insights. It provides knowledge-based services to the community in multiple forms, including its social corporate responsibility program TEACH FOR INDONESIA.

**BINUS UNIVERSITY** is one of the leading private higher education institutions with the most accolades in Indonesia. We pride the strong tradition of engaging partners from different walks of life – global companies, domestic industry, international organizations, local NGOs and the government in building and serving the nation (BINA NUSANTARA). We welcome into our education family prospects and partners with high dedication to the vision of BINUS as a world-class knowledge university... in continuous pursuit of innovation and enterprise.

With approximately 39,500+ active students, 11 campuses in Greater Jakarta, Bandung and Malang and expanding, over 50 academic programs conducted with over 200 HEI partners abroad, BINUS is in the forefront of bringing Indonesia to the world and the world to Indonesia. Our university is not only ISO accredited, our current relationship with SAP strengthens our infrastructure to take our institution to greater heights in the 21st century.

We strongly believe that Indonesia is ripe to play a greater role globally in fostering and empowering the society. As leaders from various backgrounds are noticing the resiliency of this largest ASEAN nation, BINUS would like to invite you to join us on our journey of bridging people for innovation and excellence. With the vision of fostering and empowering the society in building and serving the nation, we look forward to our strong partnerships providing education to the youth worldwide for a better future.

**Prof. Dr. Ir. Harjanto Prabowo, MM**  
Rector

# FACT SHEET

- 1974** •  
Modern Computer Course
- 1996** •  
UNIVERSITY status
- 1997** •  
ISO certification
- 2001** •  
BINUS INTERNATIONAL
- 2014** •  
BINUS NORTHUMBRIA  
SCHOOL OF DESIGN
- 2015** •  
ABET accreditation  
BINUS ASO  
School of Engineering
- 2016** •  
35th anniversary as higher  
education institution  
Malang Campus
- 2017** •  
Bandung Campus
- 2018** •  
Bekasi Campus
- 2019** •  
AACSB accreditation

Collaboration with some

**5,000**

companies

&

**200+**

universities

**636**

visiting international  
students annually

**91**

international lecturers  
teach for us yearly

**90%**

international experience at  
graduation

**11**

campuses

**318**

classrooms

**138**

laboratories

**22**

auditoria or  
hall rooms

Up to

**2,500**

residents at  
BINUS SQUARE -  
Hall of Residence

**39,500+**

active students

**113,500+**

alumni

**91%**

employed after  
graduation\*

**2 in 3**

graduates work in a global  
organization or have  
become entrepreneurs

\*survey conducted after 6 months of graduation date

**Rewarded as an engine of change....  
at home, in the region, and internationally.**



Engineering  
Accreditation  
Commission





# BINUS UNIVERSITY

## Campuses and Learning Communities

**BINUS**  
@Senayan



**BINUS**  
@Palembang



**BINUS**  
@Kemanggis



**BINUS**  
@Alam Sutera



**BINUS**  
@Bekasi



**BINUS**  
@Bandung



**BINUS UNIVERSITY Learning Communities (BULCs) facilitate alumni networking and support BINUS ONLINE LEARNING programs.**



**BINUS**  
@Semarang



**BINUS**  
@Malang

#### NEW DEVELOPMENT


- Campuses in Bandung and Malang
- BINUS UNIVERSITY Learning Community (BULC) centers in Bekasi, Malang, Palembang, and Semarang
- Global Class programs in English



# JAKARTA & INDONESIA

Jakarta, home to over 10 million people, is the capital and the largest city of the **thriving Indonesian democracy**. Futuristic skyscrapers, traditional and colonial homes, modern apartment complexes, exclusive shopping malls, traditional markets, places of worship, and survivalist shanties, all coexist in this city. Jakarta is always bustling from the sounds of wheels bringing people to the sights of economic churning. It is the country's economic, cultural and political center. Next to the inner city business hub, a growing number of museums, galleries, theatres and artisan initiatives invite for **a cultural investigation between a tumultuous past, tradition and modernity**. The city is the seat of the ASEAN Secretariat.

Indonesia is truly a regional business and cultural hub offering vibrant lifestyle, investment, and career opportunities. Global Policy Journal predicts Indonesia as Asia's Third Giant (2019). The World Bank (2019) named Indonesia as Southeast Asia's largest economy with an



More about  
Jakarta & Indonesia



exploding consuming class and the demand for skilled workers. Moreover, Indonesia exhibits **incredible diversity** in linguistic, cultural and religious traditions. Its 17,508 islands enchant with **breath-taking** flora and fauna. Marveling the sights, living the urban and wildlife adventures, and chatting with **welcoming and inquisitive Indonesians** is often the favorite pastime of our visitors from abroad.





# PARTNERSHIPS

BINUS UNIVERSITY's close understanding of trends facilitates its unmatched ability to efficiently unfold programs on demand. With BINUS **3+1 enrichment program initiative**, all undergraduates spend one year studying abroad, immersed in a startup incubator, doing an internship, or participating in community development or research projects. This approach yields **91%** of our students **securing employment** shortly upon graduation, most commonly in global companies or as entrepreneurs. We are also present in the community through our professional and volunteering services. Pioneering collaboration, BINUS has initiated the Nationwide University Network in Indonesia (NUNI) facilitating inter-university cooperation within the country.

More about BINUS Global  
Collaboration Center



Our collaboration areas lay foundation for the 3+1 enrichment program initiative and supporting projects. These are:

- curriculum review
- global learning system (GLS - virtual classroom)
- industry visit
- guest lecture
- seminar and workshop
- faculty exchange
- joint research
- student work exhibition
- student ambassadorship
- student competition
- short program
- student exchange
- student business start-up exchange
- internship
- community development

**BINUS GLOBAL** is the university's internationalization enabler, partnering with over **200 international universities** spanning five continents. The team also works with national and foreign stakeholders in pursuing its internationalization strategy of globalizing BINUS, championing Indonesia.

**BINUS CAREER** serves as a platform to connect employers with our students and graduates. To secure placements, the center utilizes its relationship with over 5,000 organizations and access to over 113,500 graduated BINUSIANS.

**BINUS ENTREPRENEURSHIP CENTER** supports students' innovations through incubation. The department works closely with established **alumni startups, companies, venture capitalists** and other stakeholders to create an entrepreneurial ecosystem.

Joint research can be initiated directly or through the Research And Technology Transfer Office of Binus University. We have several **Research Interest Groups** - bioinformatics and data science research center, photonics and computer systems, food biotechnology, BEE embedded research group, performance excellence management, educational technology, intelligent and advance system, curator (cultural and tourism) & cross-cultural communication.

Our intricate networks warrant employment outcomes...

acclist<sup>Å</sup>  
PT. Accelist Lentera Indonesia

wirecard



PROLINK®

bank  
btpn<sup>Å</sup>  
SMBC A MEMBER OF  
SMBC Group

gojek



Shopee

FKS  
GROUP

blibli.com



Indosat  
ooredoo



Agaté®

Maybank  
Finance

pajakku

EMERIO  
an NTT Communications Company

KOMPAS GRAMEDIA



Indomaret  
GROUP

**TEACHFOR  
INDONESIA**  
POWERED BY BINA NUSANTARA

BINUS' own TEACH FOR INDONESIA empowers communities through teaching, fundraising, disaster recovery, and environmental education with over 19,823 volunteers to date.







# GLOBAL OPPORTUNITIES AWAIT YOU

## AUSTRALIA

- Australian Catholic University
- Curtin University
- Deakin University
- Macquarie University
- Queensland University of Technology
- Royal Melbourne Institute of Technology
- SP Jain School of Global Management
- University of Canberra
- University of New South Wales
- Victoria University of Wellington

## BANGLADESH

- Daffodil International University

## BELGIUM

- ICHEC Brussels Management School
- Solvay Brussels School of Economics and Management

## BRAZIL

- Pontificia Universidade Catolica do Parana

## BRUNEI DARUSSALAM

- Universiti Brunei Darussalam

## CAMBODIA

- Beltei International University

## CANADA

- Universite Du Quebec A Montreal

## CHINA

- Beijing Institute of Technology
- Beijing Normal University
- Chongqing University of Posts and Telecommunications



- Gengdan Institute of Beijing University of Technology
- Guangxi University for Nationalities of The People's Republic of China
- Guangxi University of Foreign Languages
- Haikou University of Economics
- Henan University of Technology
- Hubei University of Technology
- Ningbo University
- Northwestern Polytechnic University
- South China University of Technology
- The University of Nottingham Ningbo China (UNNC)
- Xi'an Jiaotong-Liverpool University
- Xiangsihu College of Guangxi University
- Zhejiang University International Business School
- Zhejiang Yuexiu University of Foreign Languages (ZYUFL)

## CZECH

- Skoda Auto University
- Tomas Bata University

## DENMARK

- University of Southern Denmark

## FINLAND

- Finland University
- Kajaani University of Applied Sciences
- Tampere University of Technology
- University of Vaasa

## FRANCE

- Association Leonard de Vinci
- Burgundy School of Business
- Ecole de Management de Normandie
- EDC Paris Business School

- Epitech Paris Graduate School of Digital Innovation
- Hautes Etudes Internales & Politiques
- IESEG School of Management
- ISC Paris School of Management
- ISTC - Ecole de Communication
- Kedge Business School
- Toulouse Business School
- Universite Catholique de Lille
- Universite de Pau Et Des Pays De L'Adour (UPPA)
- University of Burgundy
- University of Technology of Troyes

## GERMANY

- Cologne Business School
- Karlsruhe University of Applied Sciences
- Rhine-Waal University of Applied Sciences
- University of Bremen

## INDIA

- Banasthali University
- Sathyabama Institute of Science & Technology
- SRM Institute of Science and Technology

## IRELAND

- Athlone Institute of Technology
- National University of Ireland

## ITALY

- Luiss Guido Carli University
- Sapienza University of Rome

## JAPAN

- Dokkyo University
- Hosei University
- Kanazawa Seiryo University
- Kindai University
- Nagoya University of Foreign Studies
- Ritsumeikan Asia Pacific University
- Shibaura Institute of Technology
- Tama University
- University of Toyama
- Wakayama University
- Waseda University
- Yamanashi Gakuin University

## KOREA

- Chung-Ang University
- Dankook University
- Dong-A University
- Dongguk University
- Duksung Women's University
- Global Cyber University
- Hannam University
- Hanyang University
- Inha University
- Kangwon National University
- Keimyung University

- Kookmin University
- Kwangwoon University
- Kyung Hee University
- Kyungnam University
- Kyungshin University
- Myongji University
- Sejong University
- Seoul National University of Science and Technology (SEOULTECH)
- SolBridge International School of Business
- Soongsil University
- Sungkyunkwan University
- Yeungnam University
- Yonsei University

## LITHUANIA

- Kaunas University of Technology

## MALAYSIA

- Asia Pacific University of Technology And Innovation
- Taylor's University
- Tunku Abdul Rahman University College
- UCSI University
- Universiti Malaysia Pahang
- Universiti Malaysia Sarawak
- Universiti Teknologi Malaysia
- Universiti Teknologi Mara
- Universiti Tun Abdul Razak
- University of Malaya
- University of Nottingham Malaysia Campus

## NEW ZEALAND

- Auckland University of Technology
- Victoria University of Wellington

## NETHERLANDS

- Fontys University of Applied Sciences
- HAN University of Applied Sciences
- Hanze University of Applied Sciences
- Inholland University of Applied Sciences
- Maastricht University
- Rotterdam University of Applied Sciences
- Saxion University of Applied Sciences
- University of Twente
- Windesheim University of Applied Sciences

## PHILIPPINES

- Ateneo de Manila University
- Mapua Institute of Technology
- Mariano Marcos State University
- University of Asia and the Pacific
- University of Santo Tomas

## POLAND

- Kozminski University
- Lodz University of Technology



## **RUSSIA**

- Plekhanov Russian University of Economics
- Southern Federal University
- Ural Federal University
- Vladimir State University

## **SINGAPORE**

- Lasalle College of the Arts
- Republic Polytechnic
- Singapore Polytechnic

## **SLOVENIA**

- University of Ljubljana

## **SPAIN**

- IE University
- Universitat Pompeu Fabra

## **SWITZERLAND**

- FHS St. Gallen - University of Applied Science

## **TAIWAN**

- Cheng Shiu University
- Fu Jen Catholic University
- Industrial Technology Research Institute
- I-Shou University
- National Changhua University of Education
- National Chengchi University
- National Kaohsiung Normal University
- National Pingtung University of Science and Technology
- National Sun Yat-Sen University
- National Taipei University
- National Taipei University of Technology
- National Taiwan Ocean University
- National Taiwan University of Science & Technology
- National Tsing Hua University
- National University of Kaohsiung
- Shih Chien University
- Wenzao Ursuline University of Languages

## **THAILAND**

- Bangkok University
- Kasetsart University
- Mahidol University International College
- Rangsit University
- Suan Sunandha International School of Art
- Thammasat University
- University of the Thai Chamber of Commerce

## **TURKEY**

- Istanbul Sehir University

## **UNITED ARAB EMIRATES**

- Institute of Management Technology

## **UNITED KINGDOM**

- Coventry University
- Northumbria University
- Queen Mary University of London
- University of Nottingham
- University of Suffolk

## **USA**

- Appalachian State University
- Boston University
- Johnson & Wales University
- University of California, Irvine
- University of Hawai'i at Mānoa

## **VIETNAM**

- FPT University
- Vietnam National University, Ho Chi Minh City

## **INTERNATIONAL NETWORK**

- AIMS (ASEAN International Mobility of Students)
- ISEP (International Student Exchange Program)
- FICEM (French Indonesian Consortium in Engineering and Management)
- P2A (Passage to ASEAN)

## **NATIONAL NETWORK**

- NUNI (Nationwide University Network in Indonesia)

# STUDY PROGRAMS



More about  
our programs

**Our 50+ programs  
forge globally relevant  
and tailored learning  
experience...**



BINUS UNIVERSITY tailors programs to different language groups, interests, education levels, career stages, and budgets. The pedagogical approach centers around the student's holistic development combining market relevant knowledge and a global mindset with entrepreneurship, communication, team work, problem solving and planning skills. The university offers undergraduate, graduate and doctoral programs in the following fields: BINUS Business School, BINUS Online Learning, Faculty of Business, Faculty of Economics and Communication, Faculty of Engineering, Faculty of Humanities, School of Computer Science, School of Design, and School of Information Systems. Our 1st semester runs from September to February, and the 2nd semester from February to July.

**"Is Syntax an Error? Self-motivated  
exploration encourages students to  
try things out, play with code, and  
explore new ideas."**

Jude JL Martinez (Philippines), MCS  
Deputy Head of Program  
BI Computer Science

Next to an impressive portfolio of undergraduate programs in the Indonesian language under BINUS UNIVERSITY, BINUS GRADUATE SCHOOL offers well respected master studies and a doctoral program in computer science.

BINUS ONLINE LEARNING serves as a modern learning platform for working professionals or stay-at-home individuals. The program covers various bachelor and master programs in the Indonesian language attracting over 2,400 active students every semester. Our BINUS UNIVERSITY Learning Community centers beyond Jakarta provide on-site support.

BINUS UNIVERSITY's exclusive GLOBAL CLASS option for undergraduates, delivered under the growing number of departments, offers classes that are conducted fully in English and includes an integrated study abroad experience with respected partner universities.



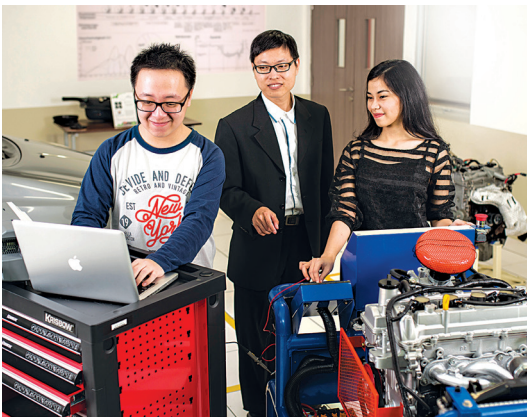
BINUS GLOBAL manages engaging high quality **special programs** for domestic and international students alongside or outside their regular study period. These are summer schools, internships, cultural immersion and short community development projects.



Since 2001, BINUS INTERNATIONAL as the university's exclusive international campus with a 100% delivery in English, provides programs with double degree/dual award access in cooperation with leading foreign HEIs such as the University of New South Wales, Macquarie University, Victoria University of Wellington, University of Nottingham, and Northumbria University. Hybrid-Modular curriculum and CIDER PARK idea incubator support project-based learning.

Affiliated programs BINUS ASO School of Engineering (Japan) and BINUS NORTHUMBRIA SCHOOL OF DESIGN (UK) take this cooperation in education delivery to new heights. The design school equips students with hands-on experience and creativity sought by the growing Indonesia's fashion industry. The involvement of ASO College Group as an experienced international partner in automotive, robotics, and product design engineering cements our reputation as provider of high quality engineering education delivered in state-of-the-art laboratories.

Established in 2007, the BINUS BUSINESS SCHOOL and its comprehensive selection of bachelor and master programs in English and Indonesian have been developed to cater to Indonesia's rising demand for highly qualified management personnel in line with the market's emergence as a thriving business hub. The school also offers a Doctorate of Research in Management.



**BINUS**

**@Kemanggisan**

**1 Syahdan  
Campus**

**2 Anggrek  
Campus**

**BINUS  
@Bandung**

**3 Kijang  
Campus**

**BINUS**

**@Senayan**

**BINUS  
@Malang**

**BINUS  
Square**

**BINUS  
@Bekasi**

**1 FX  
Campus**

**2 JWC  
Campus**

**BINUS**

**@Alam Sutera**

**1 BASE  
Campus**

**2 Alam Sutera  
Campus**



# UNDERGRADUATE PROGRAMS IN INDONESIAN

## BINUS UNIVERSITY

### Faculty of Economics and Communication

- Accounting Technology
- Accounting
- Finance
- Hospitality management
- Hospitality management - Culinary Arts
- Hotel Management
- Marketing Communication
- Mass Communication
- Tourism

### School of Computer Science

- Cyber Security
- Computer Science
- Game Application & Technology
- Mobile Application & Technology

### School of Information Systems

- Accounting Information Systems
- Information Systems
- Information Systems Audit
- Business Information Technology

### School of Design

- DKV Animation
- DKV Creative Advertising
- DKV New Media
- Interior Design
- Film

### Faculty of Engineering

- Architecture
- Civil Engineering
- Industrial Engineering
- Computer Engineering
- Food Technology

### Faculty of Humanities

- Business Law
- Chinese Literature
- English Literature
- Japanese Literature
- International Relations
- Primary Teacher Education
- Psychology

### BINUS @Bandung

- Computer Science
- Visual Communication Design
- Interior Design

### BINUS @Malang

- Business Creation
- Computer Science
- Interior Design
- Communication
- Public Relation
- Visual Communication Design (DKV)

## BINUS BUSINESS SCHOOL

- Business Creation
- Business Management
- International Business Management
- International Marketing
- Management

## BINUS ASO SCHOOL OF ENGINEERING

- Automotive & Robotics Engineering
- Product Design Engineering

# GRADUATE PROGRAMS IN INDONESIAN

## BINUS GRADUATE PROGRAM

- Master in Accounting Program
- Master in Information Systems Management
- Master in Information Technology
- Master in Industrial Engineering
- Master in Strategic Marketing Communication

## BINUS DOCTORATE PROGRAM

- Doctor of Computer Science

## BINUS BUSINESS SCHOOL

### Master Program

- MM in Creative Marketing
- MM Young Professional in Business management
- MM in Business Management - Blended Learning

### Doctorate Program

- Doctor of Research in Management

# UNDERGRADUATE PROGRAMS IN ENGLISH

## **BINUS UNIVERSITY - Global Class**

- Computer Science
- International Business Management
- International Relations

## **BINUS INTERNATIONAL**

### **Faculty of Computing and Media**

- Computer Science
- Business Information Systems

### **Faculty of Economics and Communication**

- Finance International Program
- Communication

## **BINUS NORTHUMBRIA SCHOOL OF DESIGN**

- Fashion Design
- Fashion Management
- Graphic Design
- Interactive Digital Media Design

## **BINUS BUSINESS SCHOOL**

- Business Management & Marketing
- International Business

# GRADUATE PROGRAMS IN ENGLISH

## **BINUS BUSINESS SCHOOL**

- MM Professional in Business Management
- MM Executive in Strategic Management

# ONLINE UNDERGRADUATE AND GRADUATE PROGRAMS IN INDONESIAN

## **BINUS ONLINE LEARNING**

### **Bachelors (Diploma Extension Programs)**

- Accounting
- Business Management
- Information Systems

### **Bachelors**

- Accounting
- Business Management
- Information Systems
- Information Technology
- Industrial Engineering

### **Masters**

- Master of Industrial Engineering
- Master of Management Information Systems
- Master of Information Technology

## DOUBLE DEGREES

Country	Partner	Degree
<b>Bachelors</b>		
Australia	Macquarie University*	Bachelor of Commerce
	Queensland University of Technology*	Bachelor of Information Technology; Bachelor of Business
	RMIT University*	Bachelor of Information Technology
	The University of New South Wales*	Bachelor of Commerce
	University of Wollongong*	Bachelor of Computer Science
China	Ningbo University*	Bachelor of Business Administration
France	Institut des Stratégies et Techniques de Communication**	Bachelor of Law; Bachelor of Economics and Management (Communication Courses)
Germany	Cologne Business School*	Bachelor of Art
Korea	SolBridge International School of Business*	Bachelor of Business Administration
Netherlands	Saxion University of Applied Science*	Bachelor in Marketing
New Zealand	Auckland University of Technology*	Bachelor of Computer and Information Sciences
	Victoria University of Wellington*	Bachelor of Commerce
United Kingdom	Bournemouth University*	BA (Hons) Business and Management
	Edinburgh Napier University*	BA (Hons) Business and Management
	Northumbria University Newcastle*	BSc (Hons) Business Information Systems Bachelor of Art (Hons)
	Nottingham University (UK, Malaysia, China)***	Bachelor of Science (Hons)

## Masters

Australia	Macquarie University*	Master of Commerce
France	ESC Dijon/Burgundy School of Business*	Master in Management
Korea	SolBridge International School of Business*	Master of Business Administration

## MASTER TRACK OPTIONS

Country	Partner	Degree
Australia	Macquarie University*	Master of Commerce
U.S.A	Boston University*	Master of Science

Joint Degree/Master Track run in cooperation with:

- \* BINUS INTERNATIONAL
- \*\* BINUS UNIVERSITY
- \*\*\* BINUS UNIVERSITY & BINUS UNIVERSITY INTERNATIONAL





# FACILITIES

**318 classrooms on our strategically located campuses** throughout Greater Jakarta, Bandung, Malang and BULCs are equipped with air conditioning and ICT infrastructure. Well numbered maintenance and security teams integrate **safety** into our daily lives.

Our campuses also provide:

- cozy **wired open spaces**
- **auditoriums** seating up to 1,000
- 138 science, engineering, design, fashion, film, media, and law **laboratories with the latest software and equipment**
- BINUS restaurant operated by Hotel Management students
- **Library** with 5 branches holding 110,000 titles of books, journals, multimedia and other materials in hard copy or online
- **cafeterias** with multiple vendors





BINUS SQUARE is the university's **residence hall** accommodating up to 2,500 students and visitors at a reasonable cost and in a comfortable, dynamic and safe environment. The dormitory includes:

- 4 single gender towers each with 17 floors
- 1,500 single and twin rooms with internet access
- cafeteria with multiple vendors, coffee shop, convenient store open 24h, gym, swimming pool, and laundry facilities
- **shuttle system** linking BINUS SQUARE residents to all campuses
- **chip ID card** access for ensured safety

**Our cutting edge facilities enable an inquiring mind...**



# STUDENT LIFE

## LEISURE TIME

**Bountiful activities** animate students' leisure time. Campus-wide lecture series, such as the BINUS Festival, discuss globally relevant topics. To support character building and entrepreneurial skills, student batches participate in community impact field trips or display their innovations to the BINUS community.

Running student organizations - study program associations, activity clubs, and interest communities, **BINUSIANS actively shape their free time**. Each study program has a student association, serving as a bridge between students and the program management. Activity clubs cover music, dance and sports (football, badminton, swimming, aikido, etc.). Interest communities among other may revolve around faith or volunteering. **BINUS SQUARE student committee** organizes activities for the borders including fundraising events, sports activities, music classes, and culture sharing.

## STUDENT SUPPORT SERVICES

Students feel home away from home at BINUS as they are assisted with any transition processes. BINUS SQUARE as the university's residence hall has a 24 h on-call service and staff regularly organizing excursions and soft skill workshops for students. BINUS CAREER and BINUS ALUMNI CENTERS ensure that students network for employment and entrepreneurship opportunities.

INTERNATIONAL OFFICE keeps present in the lives of international students throughout their stay assisting with housing, administrative questions, and facilitating academic orientation and social gatherings. The dynamic peer-to-peer **iBuddy** program helps with settling into BINUSIAN and Jakarta lifestyles as well as departing.



# SCHOLARSHIPS

## **BINUS WORLD CLASS SCHOLARSHIP**

BINUS World Class Scholarship rewards international students at undergraduate level demonstrating academic excellence and leadership skills.

The scholarship applies to international undergraduate programs at the Faculty of Computing and Media & the Faculty of Economics and Communication of BINUS INTERNATIONAL, BINUS BUSINESS SCHOOL, BINUS NORTHUMBRIA SCHOOL OF DESIGN, and bilingual programs at BINUS ASO SCHOOL OF ENGINEERING.

### **THE SCHOLARSHIP COVERS:**

1. 100% tuition waiver for 4 years
2. Free standard double occupancy room at BINUS Square - Hall of Residence (BSQ)
3. Free bus shuttle service
4. Application fee waiver
5. Health benefit
6. Visa and stay permit refund benefit (VITAS/KITAS only)

### **THE SCHOLARSHIP DOES NOT COVER:**

1. Extra semester credit units
2. Remedial and retake fees
3. Dual award/Double degree fees
4. Mandatory field trips/out-of-class assignments
5. Language courses
6. Living cost (food & leisure)
7. Books and supplies
8. Flights
9. Refundable BSQ security deposit
10. Graduation fees

### **SCHOLARSHIP ADMISSION REQUIREMENTS:**

1. High School Graduation - Grade 12/A level certificate/IB diploma
2. TOEFL 550 or equivalent (proficiency in Indonesian language for BASE)
3. Interview with the Head of Program
4. Non-academic achievements and/or work experience
5. GPA 3.0 / 4.0

Scholarship schemes for Indonesian nationals are also available.





**SCHOLARSHIP RENEWAL REQUIREMENTS:**

1. SGPA 2.75 / 4 (Semester Grade Point Average)
2. 5h monthly ambassadorship

**ADMISSION DOCUMENTS:**

1. Admission Form
2. Senior High School Certificate
3. Transcripts grades 9-12
4. Proof of English proficiency (Indonesian for BASE)
5. Curriculum Vitae & motivation letter
6. Entrance test (for students residing in Indonesia)
7. 2 recommendation letters (teachers/employers/community leaders)
8. Legalized senior high school equivalency certificate from the Indonesian Government (assisted by BINUS admission staff with submission of additional documents)

**(9) EQUIVALENCY DOCUMENTS**

1. Letter of Statement - Education Background (provided by BINUS)
2. ID photograph 4x6 cm (electronic version; 300 KB)
3. Birth Certificate
4. Color copy of passport personal page (passport should be valid for the full duration of study)
5. Recommendation letter from Indonesian Embassy in Home Country and/or the applicant's Embassy in Indonesia (facilitated by BINUS)

**VISA DOCUMENTS:**

1. Medical statement from a certified practitioner with health check and drug test (not older than 2 months)
2. Letter of Statement - Financial Competency (provided by BINUS)
3. Letter of Statement - Regulations Compliance (provided by BINUS)
4. Proof of financial competency (official letter from the bank with minimum USD 3,000 on applicant's account)

**REGISTRATION DOCUMENTS:**

10. Registration form
11. BSQ form (all first-year students are expected to stay at BSQ)
12. Limited stay visa
13. Health insurance proof
14. Semester 1 payment





# PARTNER TESTIMONIALS



## ARIFAN RACHMAN

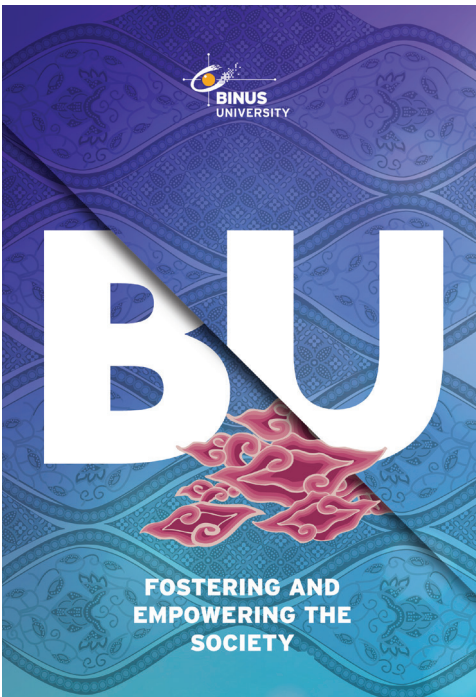
**General Manager of Corporate People Development, MPM Group, Jakarta**  
BINUS, as one of the most progressive educational institutions in the country, is an important partner for MPM Group. Our sponsorship allows students to understand our company better, to innovate during their projects, and to experience real life challenges more closely. BINUS Creates has also supported us in developing and delivering the leadership program to our employees. We are looking forward to collaborating in the future together in conceptualizing and delivering new creative ideas for the benefit of our current and future leaders.



## JOHN MOLONY

**Pro Vice-Chancellor (International), Deakin University, Australia**  
BINUS is a leading private university in Indonesia with a strong international orientation. It plays a vital role in Indonesia's economic development as it continues to educate the next generation of leaders. From a mobility perspective, BINUS provides opportunities for Deakin students in the fields of business and IT, through intensive short programs. Additionally, Deakin and BINUS also exchange semester long students for longer academic programs and cultural immersion. This partnership has fostered stronger institutional, academic and student relationships, alongside enhancing cultural understandings and cross cultural communication between Indonesia and Australia.

# STUDENT TESTIMONIALS

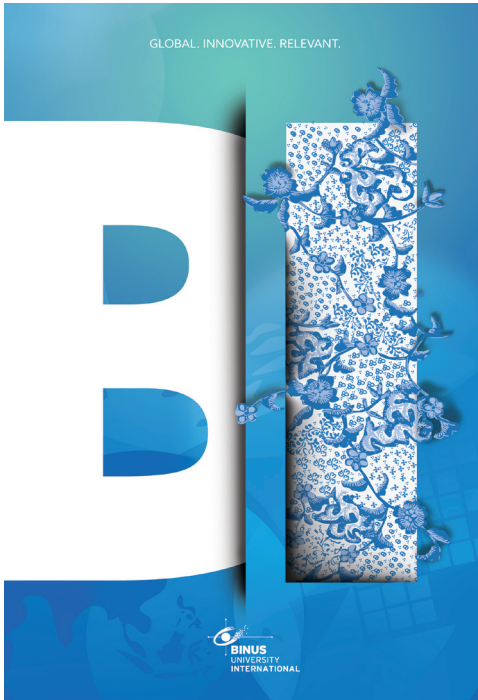


## JULIZVAR WU

**'97 (Indonesia)**

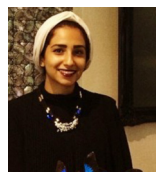
**Bachelor & Master in Information System,  
BINUS UNIVERSITY**

Currently I work as a Senior Project Manager of Professional Services at EMC in Sydney, Australia. Study at BINUS equipped me with the necessary skills to work in various multinational companies in Indonesia, Singapore, Malaysia, the Philippines, and Australia. For over 16 years working abroad, many people think I graduated from an Australian or Singaporean University. They did not expect me to be a graduate from a world-class university located in Kebon Jeruk, Jakarta, Indonesia.



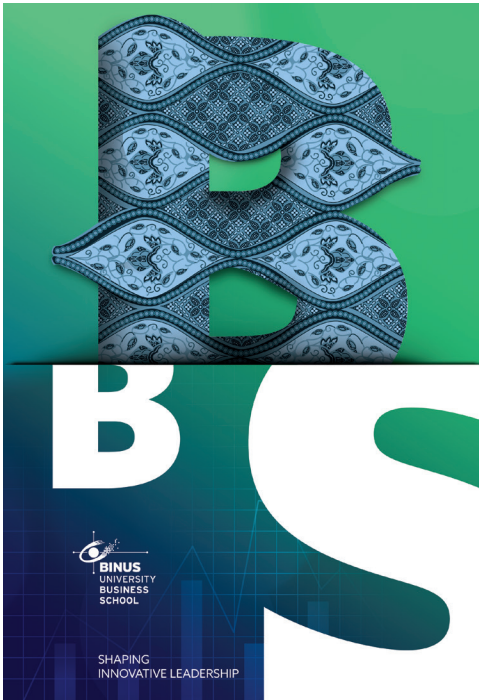
**ADITI  
'16 (India)**  
Finance,  
BINUS INTERNATIONAL

I joined BINUS UNIVERSITY as it offers an international program in my field of passion on a 3+1 track. I can learn about both Indonesian and German cultures, as I am spending my final year at Cologne Business School. BINUS teachers encourage critical thinking and take time to explain difficult theories. I also appreciate active student life on campus. Our clubs often hold large-scale competitions for university and high school students. It is a great experience for me to have organized a big event like that.



**WAJDAN ALTURKI  
'16 (Saudi Arabia)**  
Fashion Management,  
BINUS NORTHUMBRIA  
SCHOOL OF DESIGN

As one of the best universities in Jakarta that offers fashion management program, attending BINUS was in the top of my list. The staff here is also very nice and supportive, and excited about what I as a student have to offer in discussions and projects. This is what encouraged me most to join BINUS. The Fashion Management department helped me gain skills in marketing, communication, and design. I also appreciate practical opportunities important for my future career such as preparing booths with our collections at fashion shows. It was much fun to participate in Jakarta Fashion Week.



**KJELL ANDREAS  
ZEILERNORDRUM**  
**'16 (Norway)**  
International Business,  
BINUS INTERNATIONAL

Always looking for a new challenge and after living around the world with my family, I went to Asia. With the ASEAN region integrating and the Asian economy growing, it was a great opportunity to come to BINUS with teachers from all over Asia and many other countries. Students are imparted a vast range of experiences, insights to other cultures and prepared for the ever-changing conditions. At BINUS INTERNATIONAL students work with diverse teams and meet people from all over the world. Being an international business student interested in entrepreneurship, BINUS was the perfect choice as many of the teachers have their own companies and can link the practical world with the theoretical, giving you unmatched preparation after graduation. For anyone looking to work, do business or learn more about Asia there is no better choice than BINUS.



**CHRISTOPHER  
DAVID SASABONE**  
**'18 (Indonesia)**  
Product Design  
Engineering,  
BINUS ASO SCHOOL  
OF ENGINEERING

Studying at BASE has really helped me learn about the world of engineering, not only do we get to visit and stay in Japan for a month as part of our program, but we also get to learn from their engineering perspective and design. I also like the fact that the program is taught in both Bahasa Indonesia and English, that way I can use my knowledge for both languages in real life.





GLOBAL. INNOVATIVE. RELEVANT.

B  
B



DESIGN YOUR LIFE HERE



in partnership with



BINUS NORTHUMBRIA  
SCHOOL OF DESIGN



SHAPING  
INNOVATIVE LEADERSHIP



# BA S



In Partnership with

**ASO**  
COLLEGE  
GROUP  
JAPAN

**BINUS ASO**  
SCHOOL OF ENGINEERING

THE HIGH QUALITY OF  
JAPANESE EDUCATION  
NOW IN INDONESIA



Contact:

**BINUS GLOBAL**

BINUS UNIVERSITY

Jl. Kebon Jeruk Raya No. 27

Kebon Jeruk, Jakarta Barat 11530

Indonesia

Phone: +62 (0)21 534 5830 Ext. 1325

Email: [global@binus.edu](mailto:global@binus.edu)

Website: <http://global.binus.ac.id/>